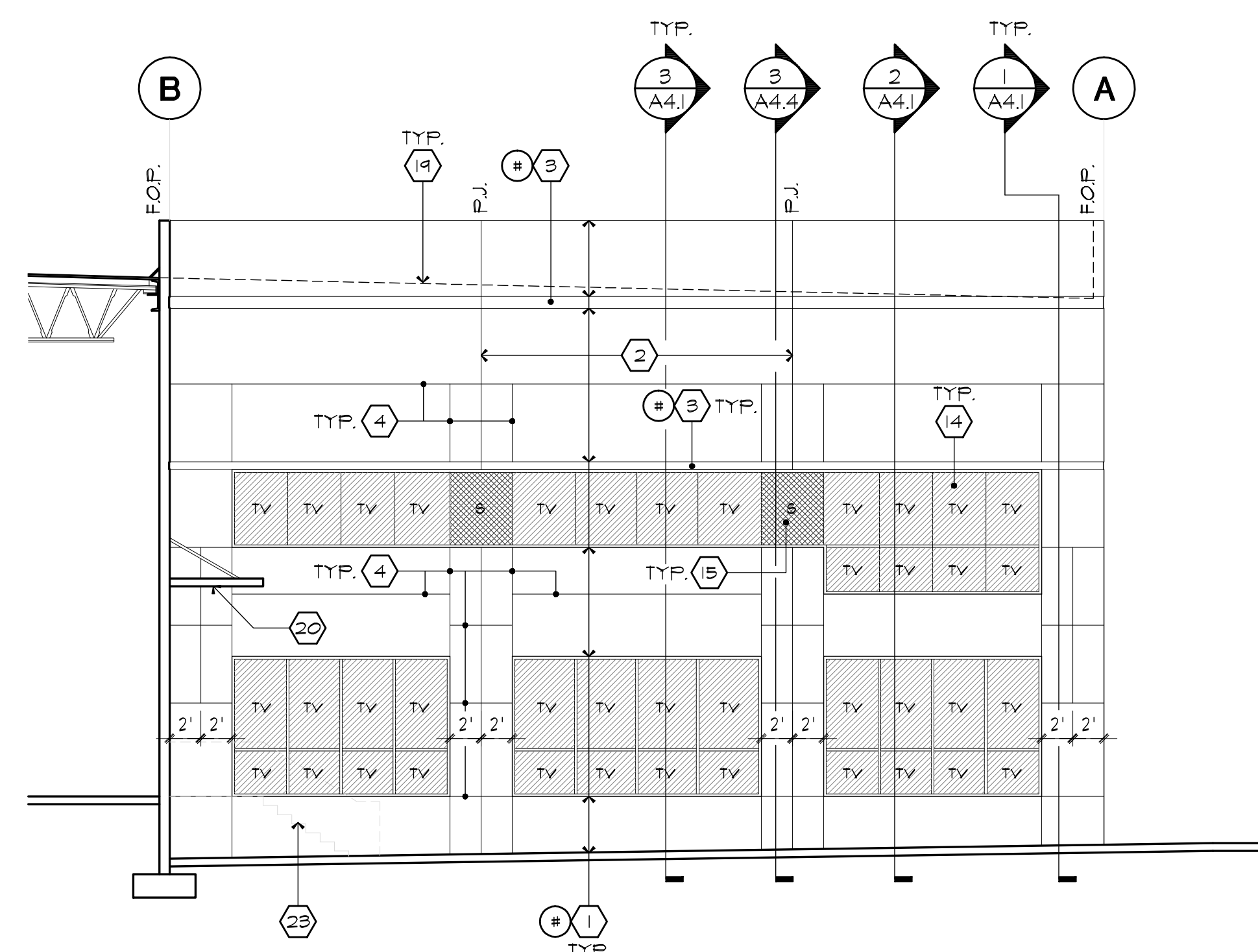
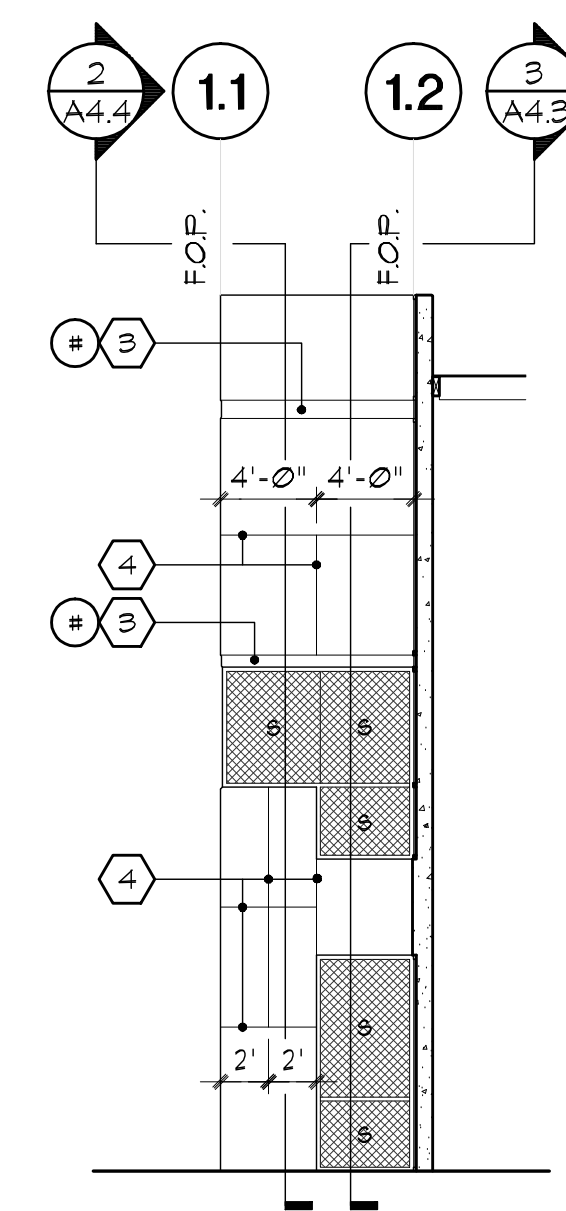


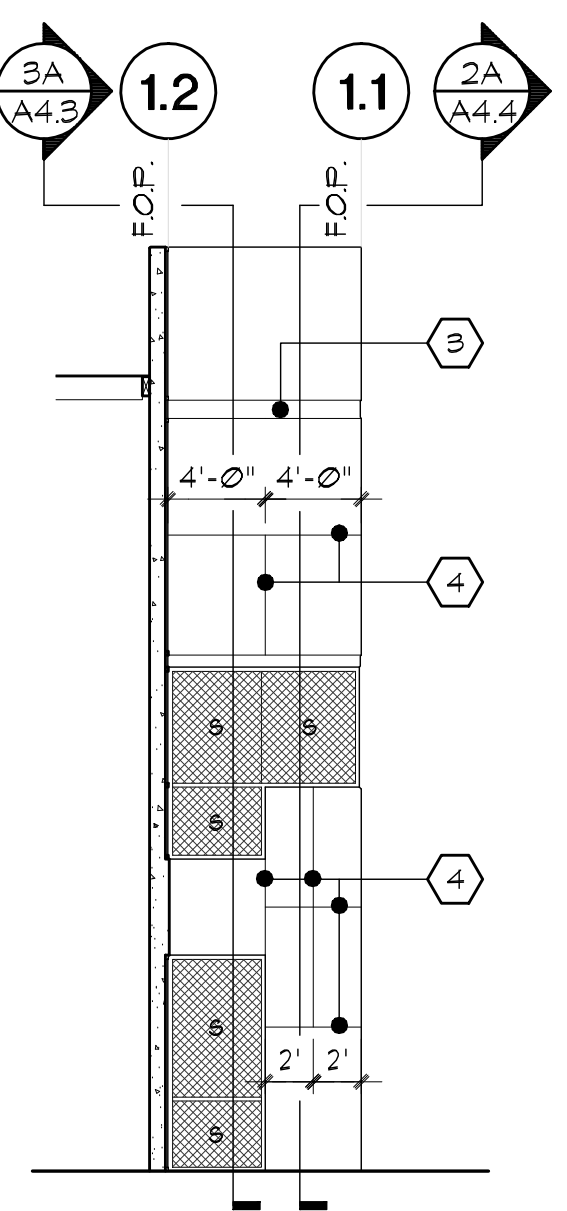
1 NORTH ELEVATION
SCALE - 1/8" = 1'-0"



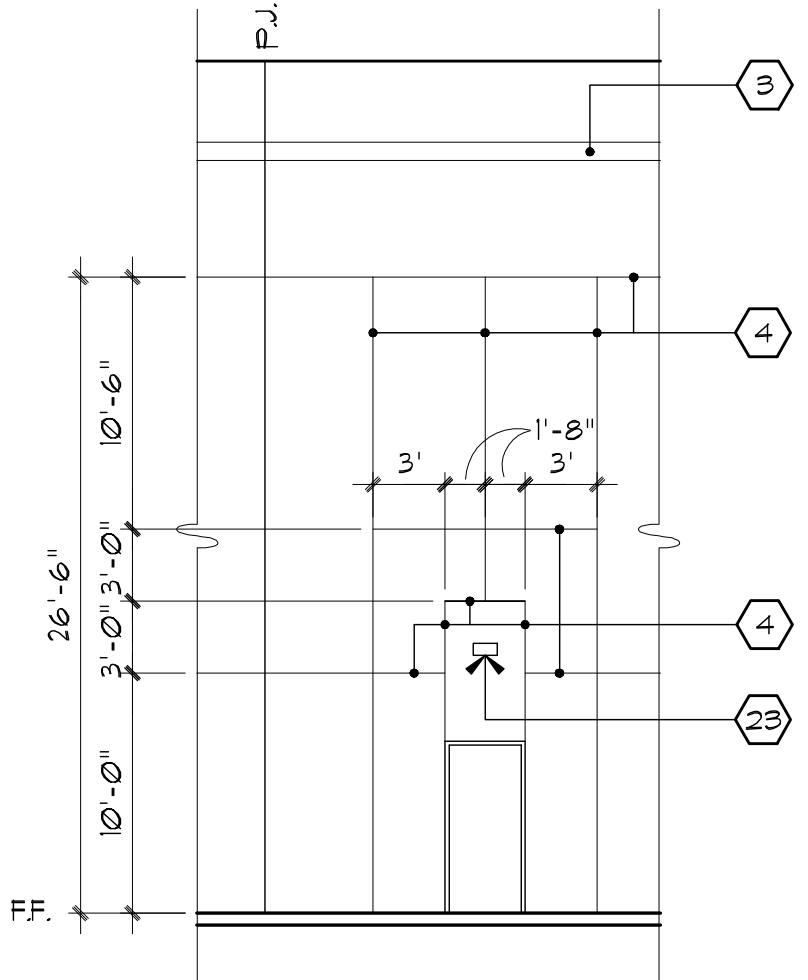
5 EAST ELEVATION
SCALE - 1/8" = 1'-0"



4 SOUTH ELEVATION AT ENTRANCE
SCALE - 1/8" = 1'-0"



3 NORTH ELEVATION AT ENTRANCE
SCALE - 1/8" = 1'-0"



2 TYP. PANEL REVEAL LAYOUT AT DOORS
SCALE - 1/8" = 1'-0"
(UNLESS SHOWN OTHERWISE ON ELEVATIONS)

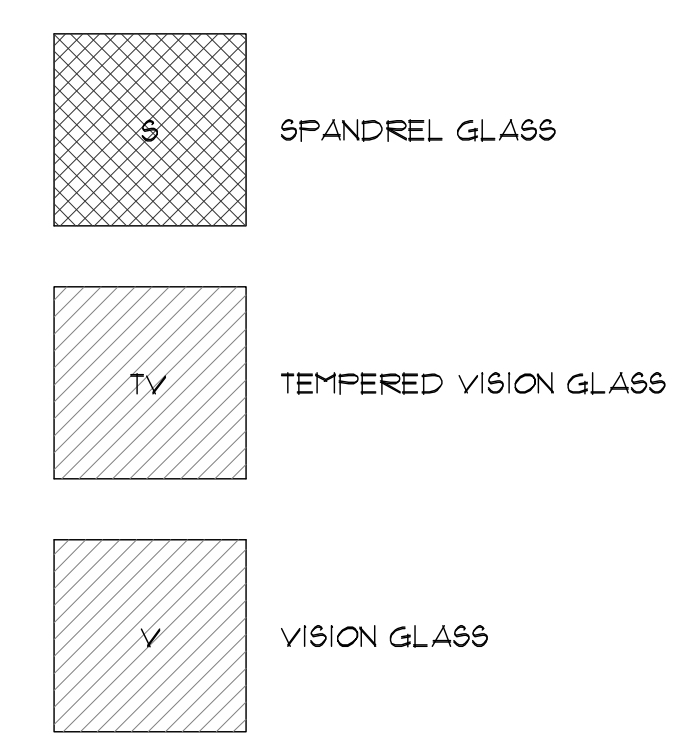
ELEVATION KEYNOTES:

- 1 CONCRETE TILT-UP PANEL (PAINTED). SEE STRUCTURAL PLANS.
- 2 PANEL JOINT. SEE DETAIL: (8/AD2) (1/AD2)
- 3 PANEL REVEAL. SEE DETAIL: (6/AD2)
- 4 PANEL REVEAL. SEE DETAIL: (10/AD2)
- 5 OVERFLOW SCUPPER PAINTED TO MATCH EXTERIOR WALL. SEE DETAIL: (7/AD1)
- 6 DOWNSPOUT DRAIN PAINTED TO MATCH EXTERIOR WALL. SEE DETAIL: (10/AD1)
- 7 KNOCK-OUT PANEL, TYP. SEE SHEET A-1
- 8 METAL DOCK DOOR, TYP. SEE DOOR SCHEDULE.
- 9 DOCK BUMPER, TYP. SEE DETAIL: (8/AD1)
- 10 NOT USED
- 11 HOLLOW METAL DOORS, TYP. SEE DOOR SCHEDULE
- 12 CONCRETE RAMP & CONC. GUARDRAIL
- 13 ALUMINUM STOREFRONT FRAMING W/ TEMPERED GLAZING AT ALL DOORS AND SIDELIGHTS ADJACENT TO DOORS. FOR ALL EXTERIOR GLAZING WITHIN 16 FT. OF GRADE, WITH THE LEAST DIMENSION OF 6 INCHES BUT LESS THAN 48 INCHES, SHALL BE 1/4" FULLY TEMPERED GLASS.
- 14 TEMPERED VISION GLASS, TYP.
- 15 SPANDREL GLAZING, TYP.
- 16 INTERIOR ROOF DRAIN WITH OVERFLOW SCUPPER, TYP. SEE DETAIL: (4/AD1)
- 17 BUILDING ADDRESS PER FIRE DEPARTMENT REQUIREMENTS.
- 18 CONCRETE STAIR, LANDING AND CONCRETE GUARDRAIL, TYP.
- 19 ROOF LINE BEYOND, TYP.
- 20 6'-0" METAL CANOPY AND STEEL SUPPORTS.
- 21 PROVIDE J-BOX WITH COVER FOR FUTURE LIGHT FIXTURE (PAINT) TO MATCH WALL PANEL
- 22 CONC. TILT-UP SCREEN WALL. SEE
- 23 SURFACE MOUNTED LIGHT FIXTURE PER ELECTRICAL DRAWINGS
- 24 CONCRETE STAIR, LANDING AND CONC. GUARDRAIL NOT SHOWN FOR CLARITY

ELEVATION GENERAL NOTES:

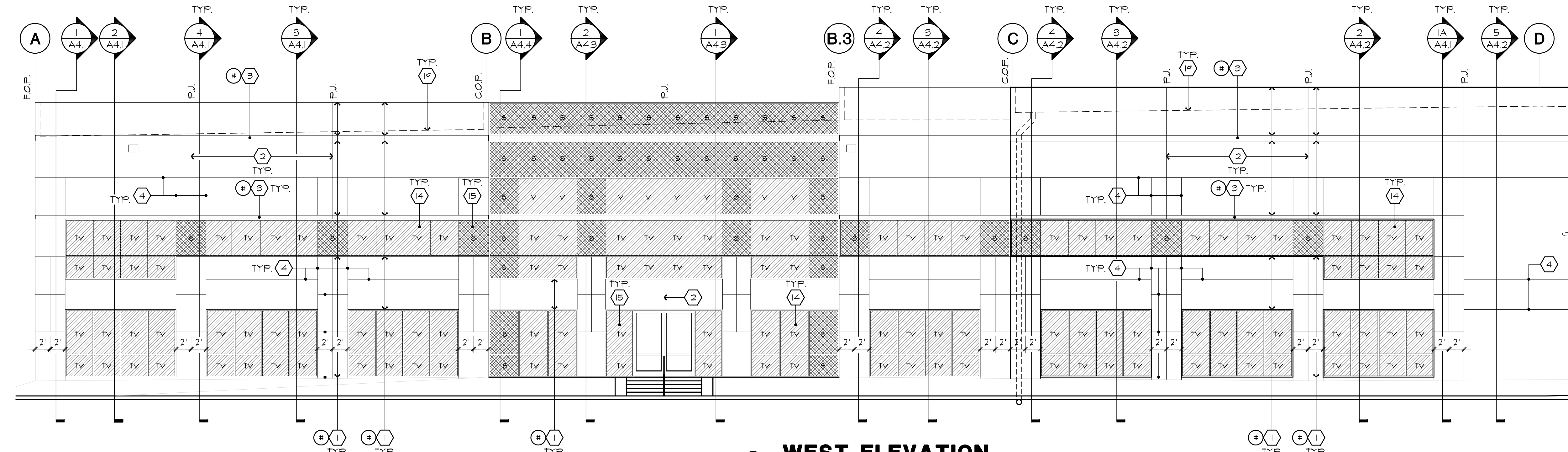
1. ALL PAINT COLOR CHANGES SHALL OCCUR AT INSIDE CORNERS UNLESS NOTED OTHERWISE.
2. ALL PAINT FINISHES SHALL BE FLAT UNLESS NOTED OTHERWISE.
3. P.J. = PANEL JOINT
4. F.O.P. = FACE OF PANEL
5. C.O.P. = CENTER OF PANEL
6. TYP. = TYPICAL
7. STOREFRONT CONSTRUCTION: GLASS, METAL ATTACHMENTS AND LINTELS SHALL BE DESIGNED TO RESIST 30 MPH EXPOSURE 'C' WINDS. CONTRACTOR SHALL SUBMIT SHOP DRAWINGS PRIOR TO CONSTRUCTION.
8. CONTRACTOR SHALL FULLY PAINT ONE CONCRETE PANEL W/ SELECTED COLORS. ARCHITECT AND OWNER SHALL APPROVE PRIOR TO PAINTING REMAINDER OF BUILDING.

GLAZING LEGEND:



ELEVATION COLOR SCHEDULE:

- | | |
|---|-------------------|
| 1 CONCRETE TILT-UP PANEL | PAIN BRAND: _____ |
| 2 CONCRETE TILT-UP PANEL | PAIN BRAND: _____ |
| 3 CONCRETE ACCENT REVEAL | PAIN BRAND: _____ |
| 4 ROLL-UP OVERHEAD DOORS AND EXTERIOR DOORS | PAIN BRAND: _____ |
| 5 MULLIONS | COLOR: _____ |
| 6 STOREFRONT GLAZING | COLOR: _____ |



6 WEST ELEVATION
SCALE - 1/8" = 1'-0"

NEW FACILITY

XEBEC BUSINESS CENTER

5777 SMITHWAY STREET
COMMERCIAL, CA

1/8" FRONT OFFICE ELEVATIONS

REVISIONS	
▲ BULLETIN #1	17AUG00
▲ BULLETIN #2	05SEP00

ISSUED FOR BID	14JUN00
DATE	20 MAR 00
SCALE	AS SHOWN
DRAWN BY	DAF
JOB NUMBER	0000